



Global strength and local focus
An introduction to Keller



Global strength and local focus

Every day, people around the world live, work and play on ground prepared by Keller, the world's largest geotechnical specialist contractor.

Our projects range in size from mega projects in the civil infrastructure and resources sectors, to smaller local sites, perhaps for a building or basement. Delivering these safely, on time and to high quality is what builds our reputation and makes us a contractor of choice.

As one of the connected companies of the Keller Group, we also have the financial strength, know-how, capacity and the reach to tackle the largest and most demanding projects.

Operating nationwide, deep market knowledge and strong client relationships make us ideally placed to respond to local engineering challenges.

Our global scale and knowledge base allow us to tap into a wealth of experience, and using proven, best practice methods developed by the brightest minds in the industry, offer the optimum solution.

Whatever the size of the project, and wherever it is in Australia or the world, Keller has the expertise, experience and financial stability to respond quickly with the optimum solution, execute safely and see the project through to a successful conclusion.



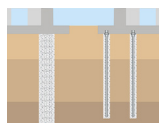
What we do

Overview

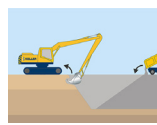
Used individually or in combination, our technologies solve a wide range of geotechnical challenges across the entire construction spectrum – from industrial, commercial and housing projects to infrastructure construction

for dams, tunnels, transportation and water treatment. We also meet the specialised geotechnical requirements that relate to renovating existing buildings and solving environmental challenges.

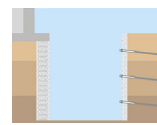
Our solutions



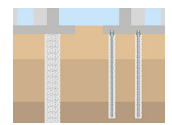
Improve bearing capacity



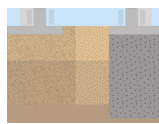
Containment



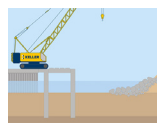
Excavation support



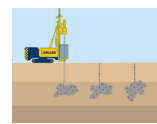
Heavy foundations



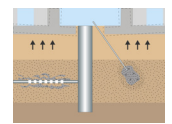
Liquefaction mitigation



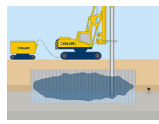
Marine structures



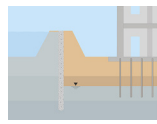
Mine stabilisation / void filling



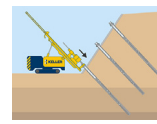
Re-levelling structures



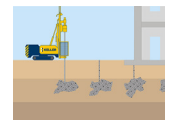
Remediation



Seepage control



Slope stabilisation



Stabilisation

All over the world

- ◆ North America Division
- ◆ Europe Division
- ◆ Asia-Pacific, Middle East and Africa Division



The benefits of Keller

Local focus:

- Familiar with specific ground conditions
- Local relationships with customers and suppliers
- Understand local customs and regulations
- Local labour and employees

Global strength:

- Access to global experts and best practice
- Strong health and safety performance
- Financial stability and guarantees
- No job goes unfinished



How Keller's global reach benefits our customers

Expertise to get the job done

If you want faster and more effective results, ask Keller to help solve your specific problem. We have probably solved a similar problem before.

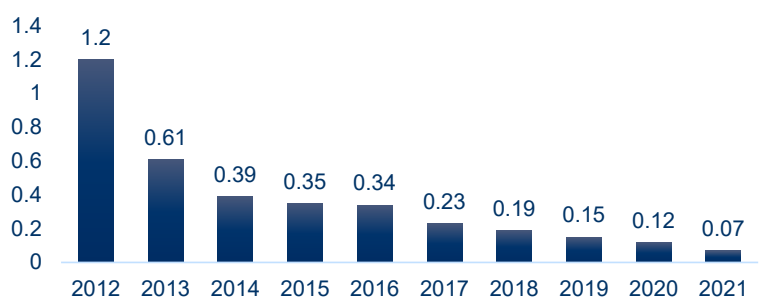
Global product teams

To enhance our engineering and operational capabilities, we have global product teams (GPTs) covering each of our major product lines. They make a difference by contributing to bids, coming up with new design methods and transferring technology and resources.

Safety culture

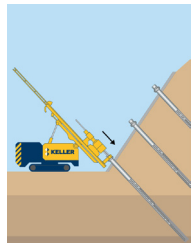
We have a strong reputation for a leading culture of safety and operational excellence. Keller is dedicated to fostering a healthy, safe work environment. The goal of our global Keller Think Safe program is zero incidents. Our management and employee commitment to this health and safety framework has rewarded us with many safety awards from our clients and industry organisations. Our industry-leading focus on training and development enables our employees to achieve their full potential and achieve operational excellence.

We believe no one should be harmed as a result of the work we do or the services we provide. Our ultimate goal is to have zero incidents through the effective management of health and safety in all our operations.

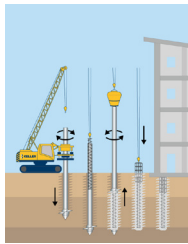


Keller global AFR

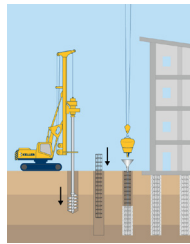
Solutions matrix



ANCHORS



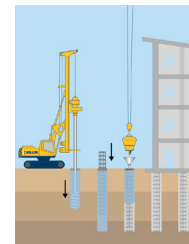
ATLAS PILES



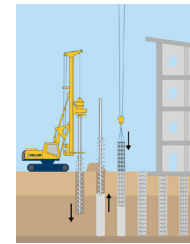
BORED PILES



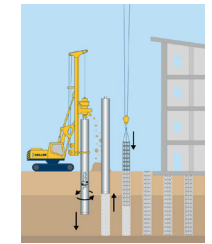
CASED BORED PILES



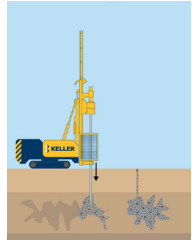
BORED PILES FLUID SUPPORT



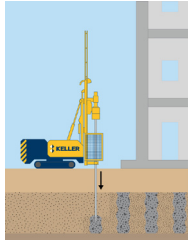
CFA PILES



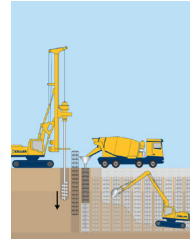
CASED CFA PILES



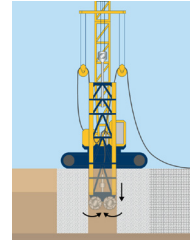
CAVITY FILL GROUTING



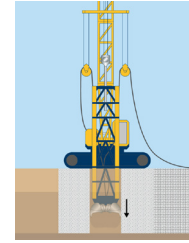
COMPACTION GROUTING



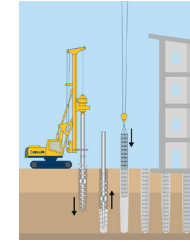
CONTIGUOUS PILE WALL



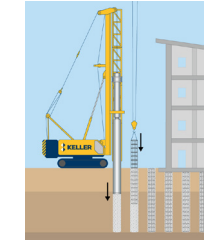
DIAPHRAGM WALL CUTTER



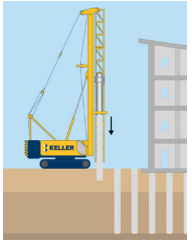
DIAPHRAGM WALL GRAB



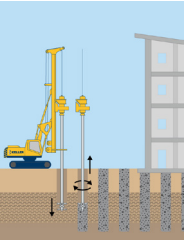
DISPLACEMENT PILES



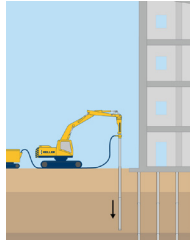
DRIVEN CAST INSITU PILES



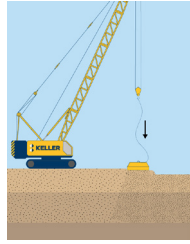
DRIVEN PRECAST PILES



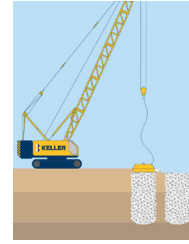
DRY SOIL MIXING



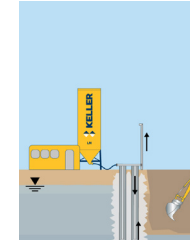
DUCTILE IRON PILES



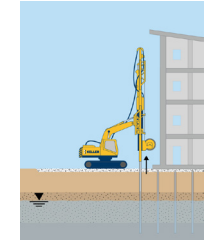
DYNAMIC COMPACTION



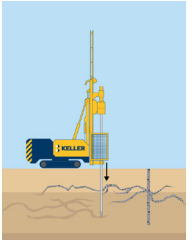
DYNAMIC REPLACEMENT



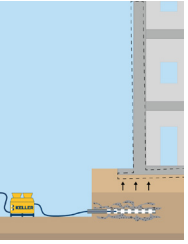
GROUND FREEZING



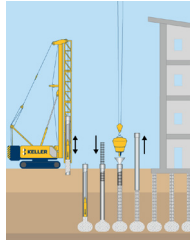
EARTHQUAKE DRAINS



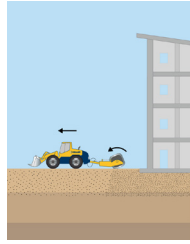
FISSURE GROUTING



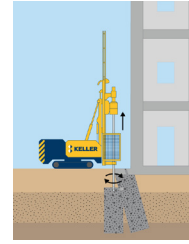
FRACTURE GROUTING



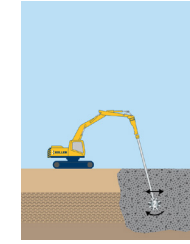
FRANKI PILES



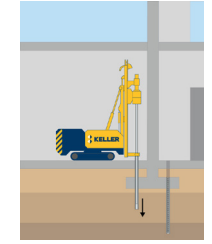
IMPACT ROLLING



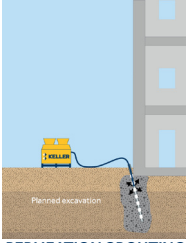
JET GROUTING



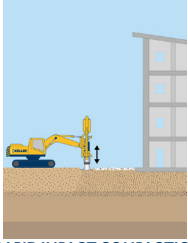
MASS MIXING



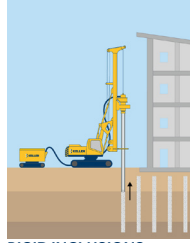
MICROPILES



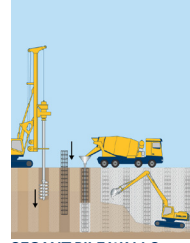
PERMEATION GROUTING



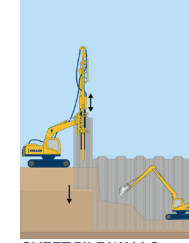
RAPID IMPACT COMPACTION



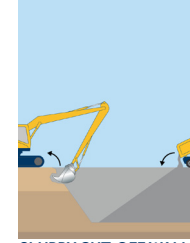
RIGID INCLUSIONS



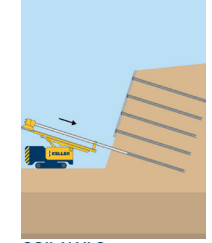
SECANT PILE WALLS



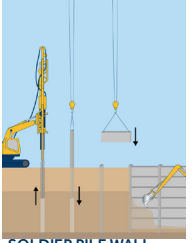
SHEET PILE WALLS



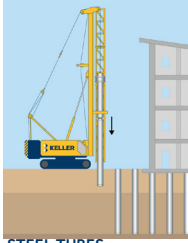
SLURRY CUT-OFF WALLS



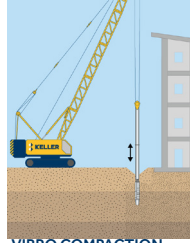
SOIL NAILS



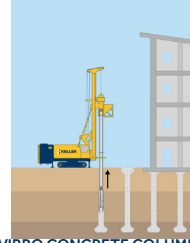
SOLDIER PILE WALL



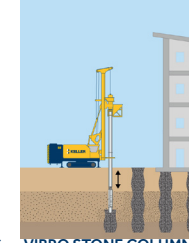
STEEL TUBES



VIBRO COMPACTION



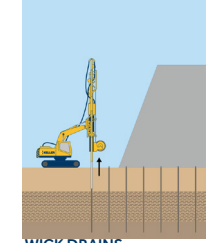
VIBRO CONCRETE COLUMNS



VIBRO STONE COLUMNS



WET SOIL MIXING



WICK DRAINS







Sustainable development goals

Our corporate purpose, 'building the foundations for a sustainable future', is at the heart of everything we do.

For us, sustainability is not just a matter of meeting legislative requirements or client demand. As important as these are, making Keller truly sustainable and implementing best practice is bigger than this. It is about the future of our business. It is about attracting the best young talent. It is about the world that we want to operate in. Above all else though, it is about doing the right thing.

We define sustainability according to the four Ps – People, Projects, Planet and Profit.

 <p>People</p> <p>We operate in a way that respects people and their health, safety and environment, always striving for zero harm. Our motivating and inclusive culture makes us a good employer that people are proud to work for.</p>	 <p>Projects</p> <p>We continually innovate to support low-carbon, low-impact construction, actively transforming our product portfolio to help our customers use fewer resources, reduce their carbon emissions and less environmental impact.</p>	 <p>Planet</p> <p>We are helping to build a sustainable future by using less resources and reducing waste across our operations, whilst playing a positive role in our communities and wider society.</p>
<p>People are our most important asset, so we strive for zero harm and to create a diverse, equitable and inclusive environment in which they can thrive.</p>	<p>Projects have many different impacts on our local environment; we are therefore committed to continued innovation and development, enabling us to offer lower carbon, lower impact solutions to our clients.</p>	<p>Planet focuses on our wider obligations and commitments as a company, both in terms of reducing waste and our need to support the wider communities in which we operate.</p>
 <p>Profit</p> <p>Making sustainability core to our business helps differentiate us from our competitors and helps us achieve long-term profitability and growth.</p>		

Finally, Profit recognises that sustainability and meeting the four Ps are essential to all our operations, for risk mitigation, long-term growth and ultimately the profitability of Keller.

<p>3 GOOD HEALTH AND WELL-BEING</p> 	<p>4 QUALITY EDUCATION</p> 	<p>5 GENDER EQUALITY</p> 	<p>8 DECENT WORK AND ECONOMIC GROWTH</p> 
<p>9 INDUSTRY, INNOVATION AND INFRASTRUCTURE</p> 	<p>12 RESPONSIBLE CONSUMPTION AND PRODUCTION</p> 	<p>13 CLIMATE ACTION</p> 	<p>15 LIFE ON LAND</p> 

To improve these four Ps, we align our sustainability strategy with the United Nations sustainable development goals (SDGs). These provide a holistic language to communicate our sustainability framework with all our stakeholders, regardless of size, complexity or location. Of the 17 SDGs, we specifically focus on those that are most closely aligned to Keller's core business and where we can have the greatest impact.





Contact us

Sydney

02 8866 1100 | nsw@keller.com.au

Brisbane

07 3292 3333 | qld@keller.com.au

Melbourne

03 9590 2500 | vic@keller.com.au

Adelaide

08 8125 7272 | sa@keller.com.au

Perth

08 9350 5658 | wa@keller.com.au

www.keller.com.au